

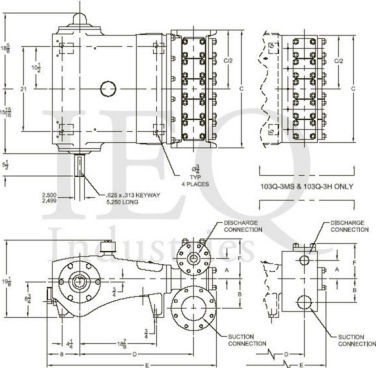
Wheatley, Q3150-L, Quintuplex, Plunger Pump

Pumps in this series

- Q3150-H
- Q3150-L
- Q3150-M
- Q3150-MS

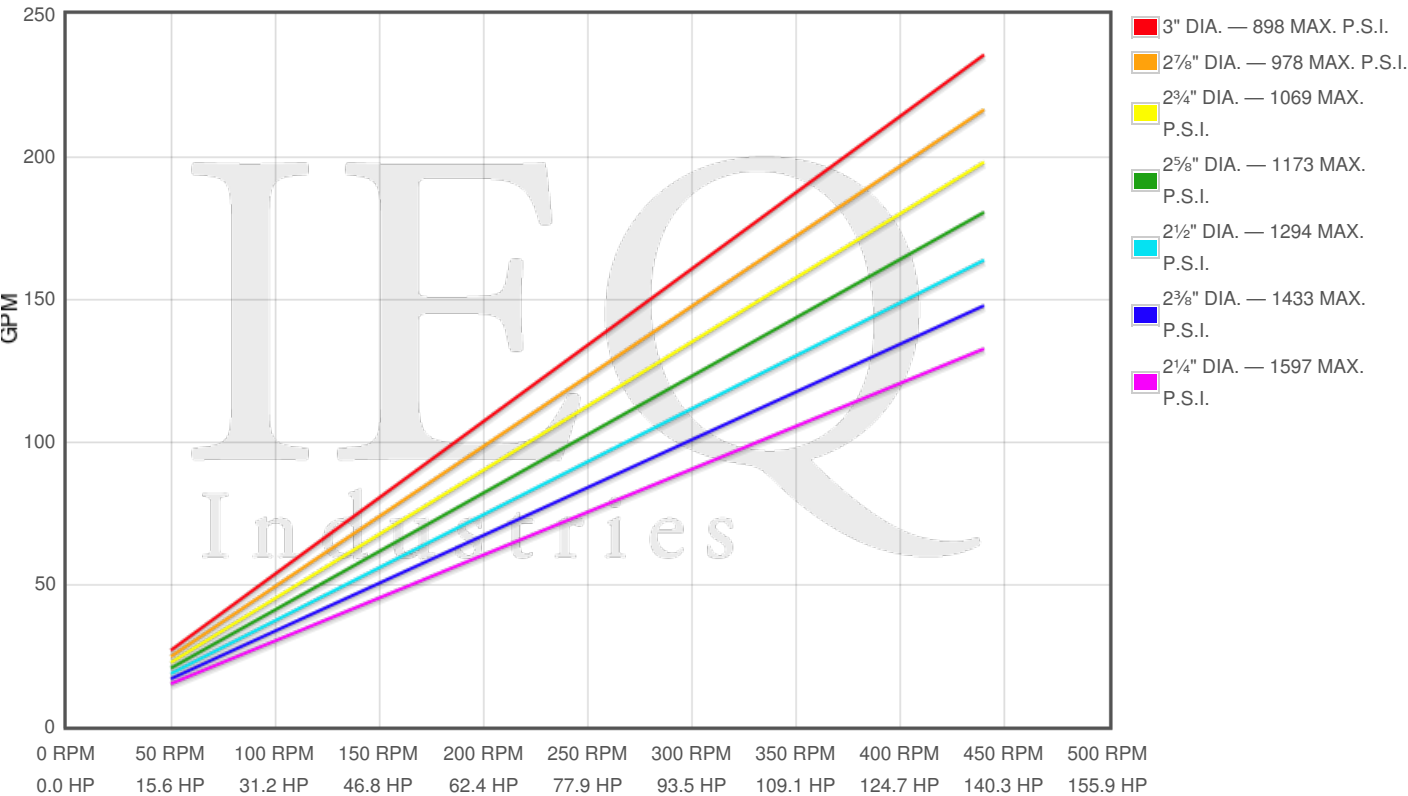
Specs

Spec	U.S. Standard
Type:	quintuplex
Minimum Plunger Diameter:	2 1/4"
Maximum Plunger Diameter:	3"
Stroke length:	3 1/2"
Maximum Working Pressure:	1,600 PSI
Rod/Piston Load:	6350lb
Gallons per Minute:	235.6
Barrels per Day:	8078
Brake Horse Power:	137.4



Pump Curves

Hover over Power Curves to reveal RPM and GPM



Performance Data Table

Pump	English Units					50 RPM		150 RPM		250 RPM		350 RPM		440 RPM	
	Plunger Dia. In.	Plunger Area Sq. In.	BPD per RPM	GPM per RPM	Max Press. PSI	BPD	GPM	BPD	GPM	BPD	GPM	BPD	GPM	BPD	GPM
Q3150-L	3.000	7.0686	18.360	0.5355	898	918	27	2754	80	4590	134	6426	187	8078	236
	2.875	6.4918	16.862	0.4918	978	843	25	2529	74	4216	123	5902	172	7419	216
	2.750	5.9396	15.427	0.4500	1069	771	22	2314	67	3857	112	5400	157	6788	198
	2.625	5.4119	14.057	0.4100	1173	703	20	2109	61	3514	102	4920	143	6185	180
	2.500	4.9087	12.750	0.3719	1294	637	19	1913	56	3188	93	4463	130	5610	164
	2.375	4.4301	11.507	0.3356	1433	575	17	1726	50	2877	84	4027	117	5063	148
	2.250	3.9761	10.327	0.3012	1597	516	15	1549	45	2582	75	3615	105	4544	133

Disclaimer I

This website is intended as a reference tool only. It has been constructed from published data that is based on manufacturer's sales and engineering documents that are either current, historical and obsolete. Much of the machinery data contained herein has been re-rated through the years with different engineering criteria which maybe in conflict with legacy data. Much of the content published here is calculated online with the use of dynamic data using formulas and extrapolations considered to be sound engineering formulas and are correct to the degree that the data used is accurate. We have done our best to be as precise as as possible in this posting but do not represent any of the calculations or performance data to be entirely accurate. The data published here is intended to be general information rather than actual and to serve as a reference rather than a technical absolute. The user of such data should confirm such information independently.

Copyright and Disclaimers

WheatleyGaso.com is your resource for Gaso pumps, Gaso pump parts and a supplier of ORIGINAL GASO PARTS and equipment, new used and remanufactured Wheatley, GASO and Wheatley/GASO plunger and piston pumps and pump parts and is not affiliated with Wheatley/GASO Inc. or its parent company, National Oilwell Varco, p Copyright Å©2017, IntelleQ Holdings, LLC. All rights reserved, *Used under license from IntelleQ Holdings, LLC.