

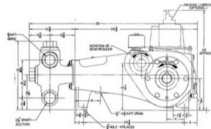
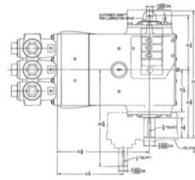
Wheatley, P364, Triplex, Plunger Pump

Pumps in this series

P364

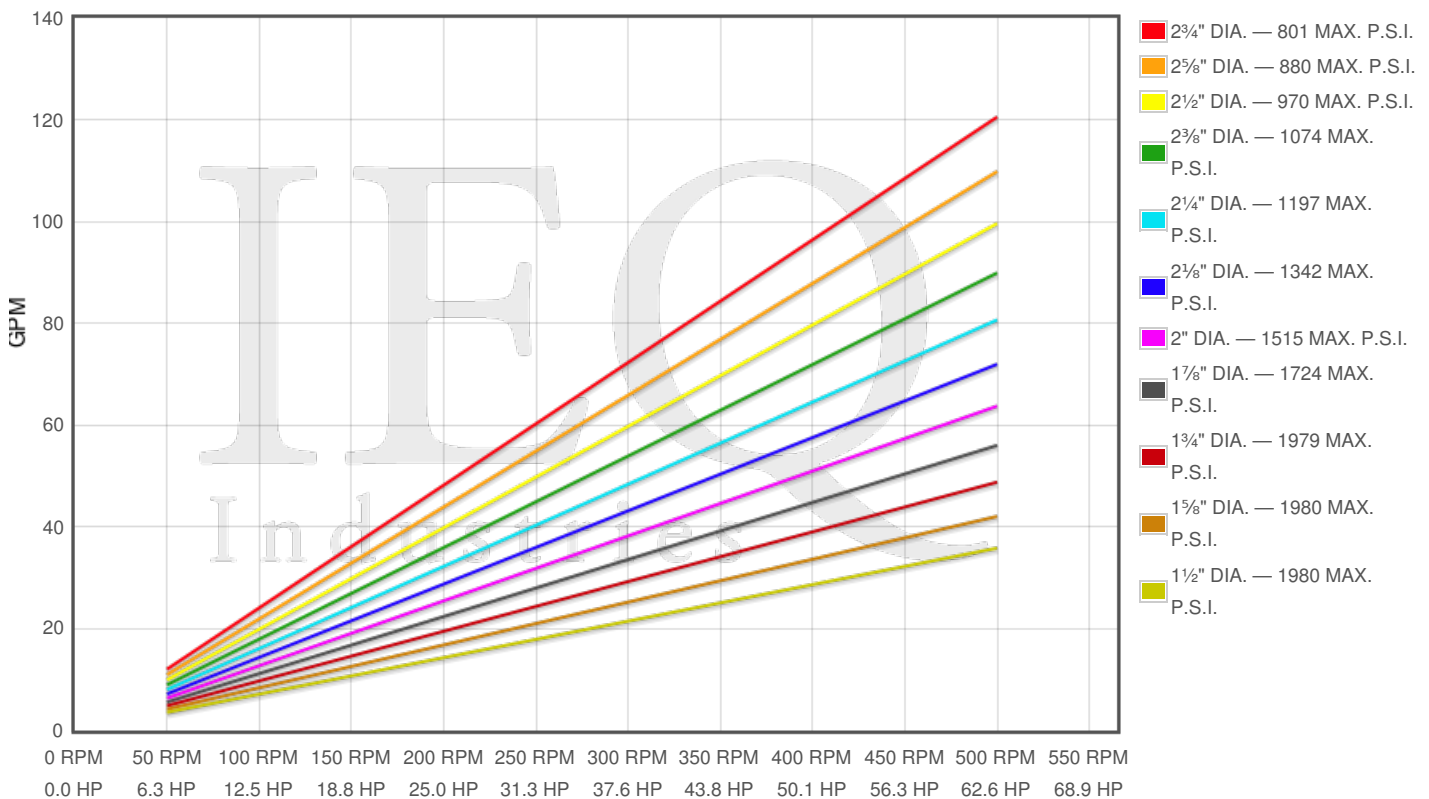
Specs

Spec	U.S. Standard
Type:	triplex
Minimum Plunger Diameter:	1½"
Maximum Plunger Diameter:	2¾"
Stroke length:	3⅜"
Maximum Working Pressure:	1,980 PSI
Rod/Piston Load:	4760lb
Gallons per Minute:	98.0
Barrels per Day:	3360
Brake Horse Power:	57.0



Pump Curves

Hover over Power Curves to reveal RPM and GPM



Performance Data Table

Pump	English Units					50 RPM		200 RPM		350 RPM		500 RPM	
	Plunger Dia. In.	Plunger Area Sq. In.	BPD per RPM	GPM per RPM	Max Press. PSI	BPD	GPM	BPD	GPM	BPD	GPM	BPD	GPM
P364	2.750	5.9396	8.265	0.2411	801	413	12	1653	48	2893	84	4132	121
	2.625	5.4119	7.530	0.2196	880	377	11	1506	44	2636	77	3765	110
	2.500	4.9087	6.830	0.1992	970	342	10	1366	40	2391	70	3415	100
	2.375	4.4301	6.164	0.1798	1074	308	9	1233	36	2158	63	3082	90
	2.250	3.9761	5.533	0.1614	1197	277	8	1107	32	1936	56	2766	81
	2.125	3.5466	4.935	0.1439	1342	247	7	987	29	1727	50	2468	72
	2.000	3.1416	4.371	0.1275	1515	219	6	874	25	1530	45	2186	64
	1.875	2.7612	3.842	0.1121	1724	192	6	768	22	1345	39	1921	56
	1.750	2.4053	3.347	0.0976	1979	167	5	669	20	1171	34	1673	49
	1.625	2.0739	2.886	0.0842	1980	144	4	577	17	1010	29	1443	42
	1.500	1.7671	2.459	0.0717	1980	123	4	492	14	861	25	1230	36

Disclaimer I

This website is intended as a reference tool only. It has been constructed from published data that is based on manufacturer's sales and engineering documents that are either current, historical and obsolete. Much of the machinery data contained herein has been re-rated through the years with different engineering criteria which maybe in conflict with legacy data. Much of the content published here is calculated online with the use of dynamic data using formulas and extrapolations considered to be sound engineering formulas and are correct to the degree that the data used is accurate. We have done our best to be as precise as as possible in this posting but do not represent any of the calculations or performance data to be entirely accurate. The data published here is intended to be general information rather than actual and to serve as a reference rather than a technical absolute. The user of such data should confirm such information independently.

Copyright and Disclaimers

WheatleyGas.com is your resource for Gaso pumps, Gaso pump parts and a supplier of ORIGINAL GASO PARTS and equipment, new used and remanufactured Wheatley, GASO and Wheatley/GASO plunger and piston pumps and pump parts and is not affiliated with Wheatley/GASO Inc. or its parent company, National Oilwell Varco, p Copyright ©2017, IntelIQ Holdings, LLC. All rights reserved, *Used under license from IntelIQ Holdings, LLC.